

Munich standard

Recycling Bins Collectives Spaces Indoor/Outdoor

Robust & Great Strength High Performance Bin

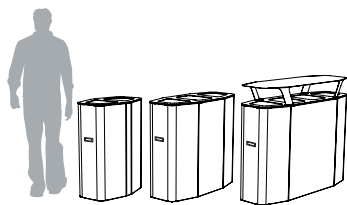
- Stylish recycling bin with an excellent ratio of design & performance
- Available in capacities from 100 to 220 litres, for 2,3 or 4 wastes
- Made from 1, 1,5 and 3 mm cold rolled hot dip galvanized steel plates
- Joint elements made from high-strength stainless steel
- Double metal structure which gives greater strength
- Thermo-heating polyester powder coated finish
- Optionally available Stainless Steel version. (Body Stainless Steel and lid Galvanized Steel powder coated finish)
- EES (Ergonomic Emptying System): Safe & efficient emptying with inner ring bag holder for each waste. Inner rings are integrated & articulated in the body of the bin
- Available with metal inner liner version
- Inner ring bag holder and metal inner liner incorporate a rubber band to hold the bag avoiding the bag falling down when it is full
- SLIM-FIT: Plastic bags that saves money, much more efficient



*Bins Also Compatible with Standard Plastic Bags

- Internal walls with separate compartments for each waste
- Hinged lid with key lock
- Handles in side to easy handled
- Lid opening system that allows to place the bin against a wall without interfering the opening
- Adjustable-height plastic feet
- Available special versions: white edition and sorting slots
- Accessories: rainhood, front waste adhesives, liquid bunds, Kaizen 1 litre ashtray, wheels kit
- Possibility to be fixed to the ground from inside with 4 M8 expanding bolts (not included)
- This product can be used outdoor under regular environmental conditions

For Salty areas (high salinity/humidity) are available extra finishes (check Extra Finishes) which improves significantly the corrosion resistance of bin in extreme environments conditions. These extra options involve extra cost and MOQ is required

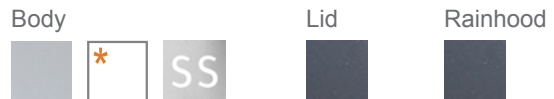


Description	Dimensions mm	Weight
Munich 2W 100 litres (50+50L.)	390 x 598 x 815 *390 x 598 x 965	47 Kg. *51 Kg.
Munich 3W 160 litres (50+60+50L.)	390 x 890 x 815 *390 x 890 x 965	67 Kg. *73 Kg.
Munich 4W 220 litres (50+60+60+50L.)	390 x 1182 x 815 *390 x 1182 x 965	89 Kg. *97 Kg.

* with Rain Hood



Colours



*Only available for 3W 160L version

STANDARD VERSIONS



Munich bin 2W
100L Standard



Munich bin 3W
100L Standard



Munich bin 4W
100L Standard

COLLECTION SYSTEM



Inner Ring
Bag-holder



Metal
Inner-liner



This technical data sheet cancels all previous data referred to this product.

Technical and material specifications of this product may change for improvement without prior notice.

Phone. (+34) 96 555 02 67
Fax. (+34) 96 555 37 62

Avda. del juguete, 14
03440 IBI (Alicante) Spain

sales@cervic.com
www.cervicenvironment.com

2016
v. 01

Munich standard

Recycling Bins Collectives Spaces Indoor/Outdoor

SPECIAL VERSIONS



White Edition
Munich bin 3W



Munich bin
Sorting Slots



Munich bin
Stainless Steel

ACCESSORIES



Frontal wastes
Adhesives



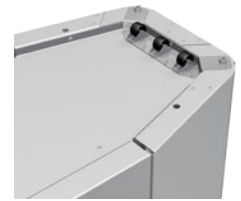
Rain Hood



Kaizen
Ashtray 1 l.



Liquid
Retention Tray



Wheels kit
(one side)



Phone. (+34) 96 555 02 67
Fax. (+34) 96 555 37 62

Avda. del juguete, 14
03440 IBI (Alicante) Spain

sales@cervic.com
www.cervicenvironment.com

2016
v. 01